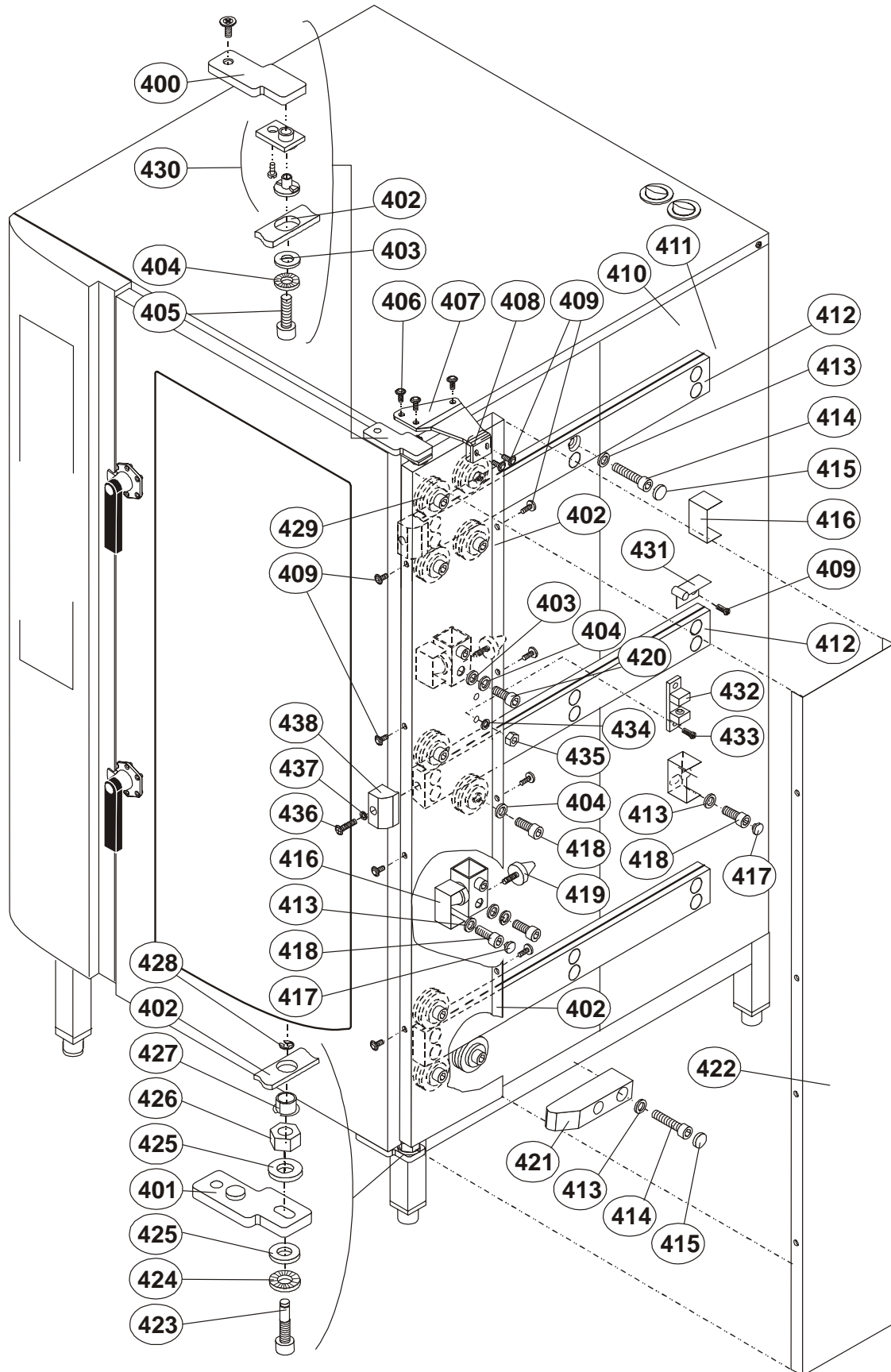


## 6.30 Disappearing Door Replacement / Adjustment / Spare Part Replacement



### 6.30.1 Disappearing door replacement



#### Safety:

- Before disassembling, secure door against tilting or falling off.



#### Instructions – Disassembling door:

- Remove the trolley plate cover panel **422**. Unscrew the MLF-screws with hexagon socket **409** and remove panel.
- Pull off locking washer **408** from bearing bolt **423**.
- Remove nut **426**, by holding the bearing bolt **423** with an allen key.
- Unscrew bearing bolt **423**.
- (On the upper bearing, the bolt **405** remains screwed to the frame **158c**. The screen panel **158a** is screwed together with the screw **158b** on the hinge plate **400**.)
- Tilt door slightly (swing out from underneath) and lift up and out.

**Attention:** Do not remove or disassemble Parts **400** (upper hinge plate) and **401** (lower hinge plate), as they are stuck to the door.

- Replace door. If necessary, replace worn parts **427** and **158**.



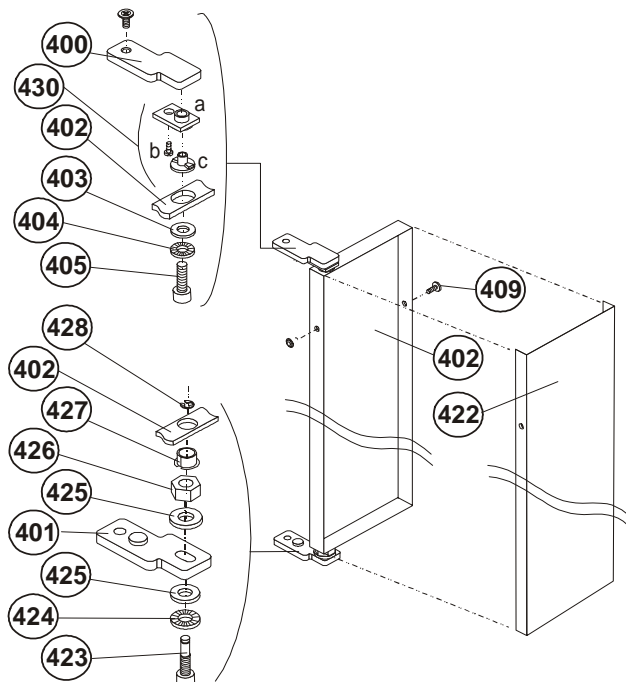
#### Notice:

- When the screws are not removable, use a drive screw (not on **400** and **401**).



#### Instructions – Assembling door:

- Hang door from above into the frame **158c**, adjust vertically.
- Place the bearing bolt **423** with the conical lock washer **424** and underlay washer **425** through the lower hinge plate.
- Screw the nut **426** with underlay washer **425** onto the bearing bolts **423**.
- Place the locking washer **428** onto the bearing bolts **423**.
- Adjust door -- see 6.30.2 VST adjustment.
- Assemble the trolley plate cover **422** with the MLF-screw **409** onto the trolley plate **402**.



### 6.30.2 Disappearing door adjustment



#### Information:

- The door hangs or has been replaced due to a door defect.



#### Instruction:

- Remove nut **426**, holding the bearing bolt **423**.
- Do not unscrew the bearing bolts **423**.
- Using the elongated slot in the bearing, the door can now be adjusted to the correct position.
- Screw the nut **426** on tightly again.



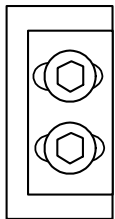
#### Information:

- Door doesn't seal or is difficult to close.



#### Instructions:

- Loosen the direction bow **407** by removing the MLF-screws **406**.
- Slide door towards the back and swing out, in order to reach the front stop plate **416**.
- Pull off the cap **417** from the fastening screws **418** of the front stop plate **416**.
- Loosen hexagon head cup screw **418** and slide the front stop plate **416** to the desired position.



Door doesn't seal → slide to the back  
Door is difficult to close ← slide to the front



- Screw stop plate **416** on again tightly and place cap **417** back on.
- Screw guide bow **407** on again with the MLF-screws **406**.



#### Notice:

- The trolley plate should be parallel to the front unit edge.

### 6.30.3 Roller replacement / adjustment



#### Check:

- Door rattles when slid forwards and backwards.
- Door and trolley plate have too much room (are loose).



#### Maintenance:

- Keep guide rails and rollers clean.
- Wipe guide rails with a dry cloth – no water spray!
- Smear guide rails with the grease provided.



#### Instructions - Roller replacement:

- Disassemble door → see Chapter „6.30.1 Disappearing door replacement “ and put safely aside.
- Pull off cap **417** from the fastening screws **418** on the rear stop plate **416**.
- Remove hexagon head cup screw **418** and disassemble the rear stop plate **416**.
- Pull trolley plate **402** out from behind.

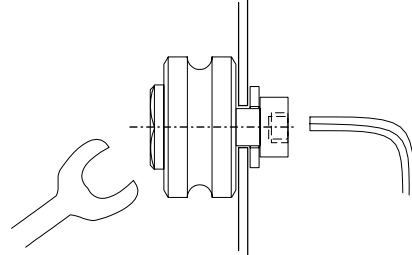
\* = Position numbers relate to the drawings on page 1 / 5!

**Instructions – Removing the rollers 429\*:**

- Remove the hexagon head cup screw 418 on the defective roller with an allen key (use wrench to hold).
- Remove roller.

**Instructions – Assembling the rollers:**

- Insert new roller 429.
- Screw on tightly the roller with the hexagon head cup screw 418 and conical locker washer 413.
- Place trolley plate 402 on the guide rails from the back 412 and push onto the rails.
- Re assemble the rear stop plate 416.
- Assemble door.

**6.30.4 Stop buffer replacement****Check:**

- No buffer on the disappearing door for the end stop.

**Instructions:**

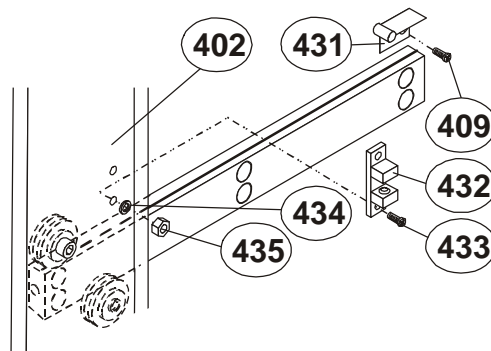
- Disassemble the cover for the trolley plate 422 by removing the MLF-screws 409.
- Remove the hexagon head cup screws 420.
- Disassemble the stop pipe with the stop buffer 419.
- Unscrew the stop buffer 419 and screw on a new stop buffer 419.
- Tightly screw on the stop pipe with the hexagon head cup screw 420 and the conical locking washer 404 from the back onto the trolley plate 402.
- Screw on the cover for the trolley plate 422 with the MLF-screws 409 onto the trolley plate.

**Notice:**

Make sure that the middle buffer is facing towards the front of the unit.

**6.30.5 Catch for the trolley plate replacement****Instructions:**

- Disassemble the cover for the trolley plate 402. Remove nut 435 with underlay washer 434 above and below the ball clasp 432 and disassemble the ball clasp.
- Screw on new ball clasp with 2 screws 433 with nuts 435 and screws 434.



\* = Position numbers relate to the drawings on page 1 / 4!